

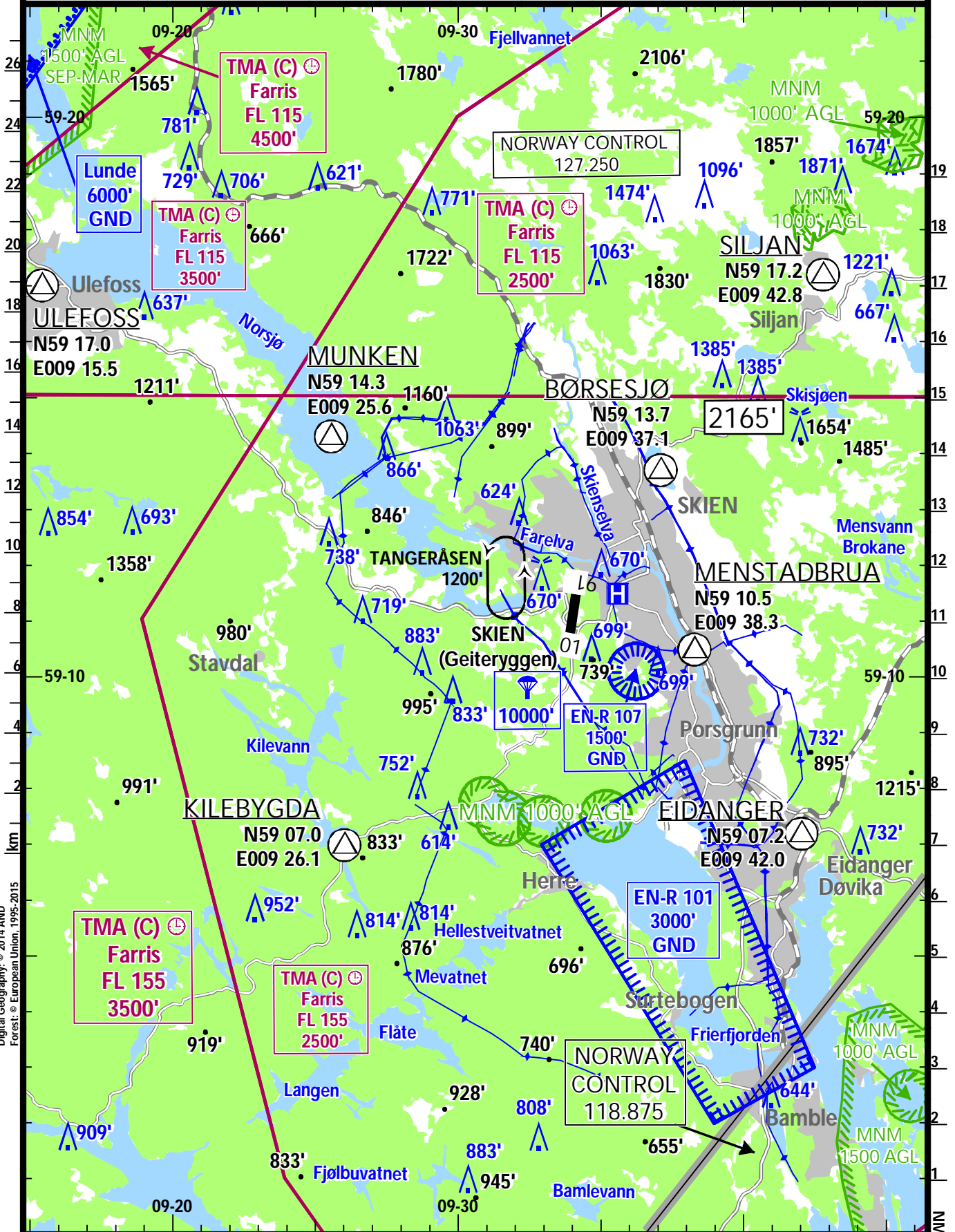
ENSN
GEITERYGGEN

23 AUG 19 **(19-1)**

SKIEN
NORWAY

BRIEFING STRIP™	LOCATION Elev 463' /141m N59 11.1 E009 34.0	FIS NORWAY CONTROL 127.250	ATIS ATIS 121.700	VAR 2°E
	AIRSPACE FARRIS APPROACH 124.350 ^{(1) (2)} 134.050 ^{(1) (3)}	RADIO GEITERYGGEN TRAFFIC 119.200 ⁽⁴⁾		

(1) Farris TMA (2) E (3) W (4) Blind transmissions



Digital Geography: © 2014 AND
Forest: © European Union, 1995-2015

ENSN
GEITERYGGEN

23 AUG 19 **(19-2)**

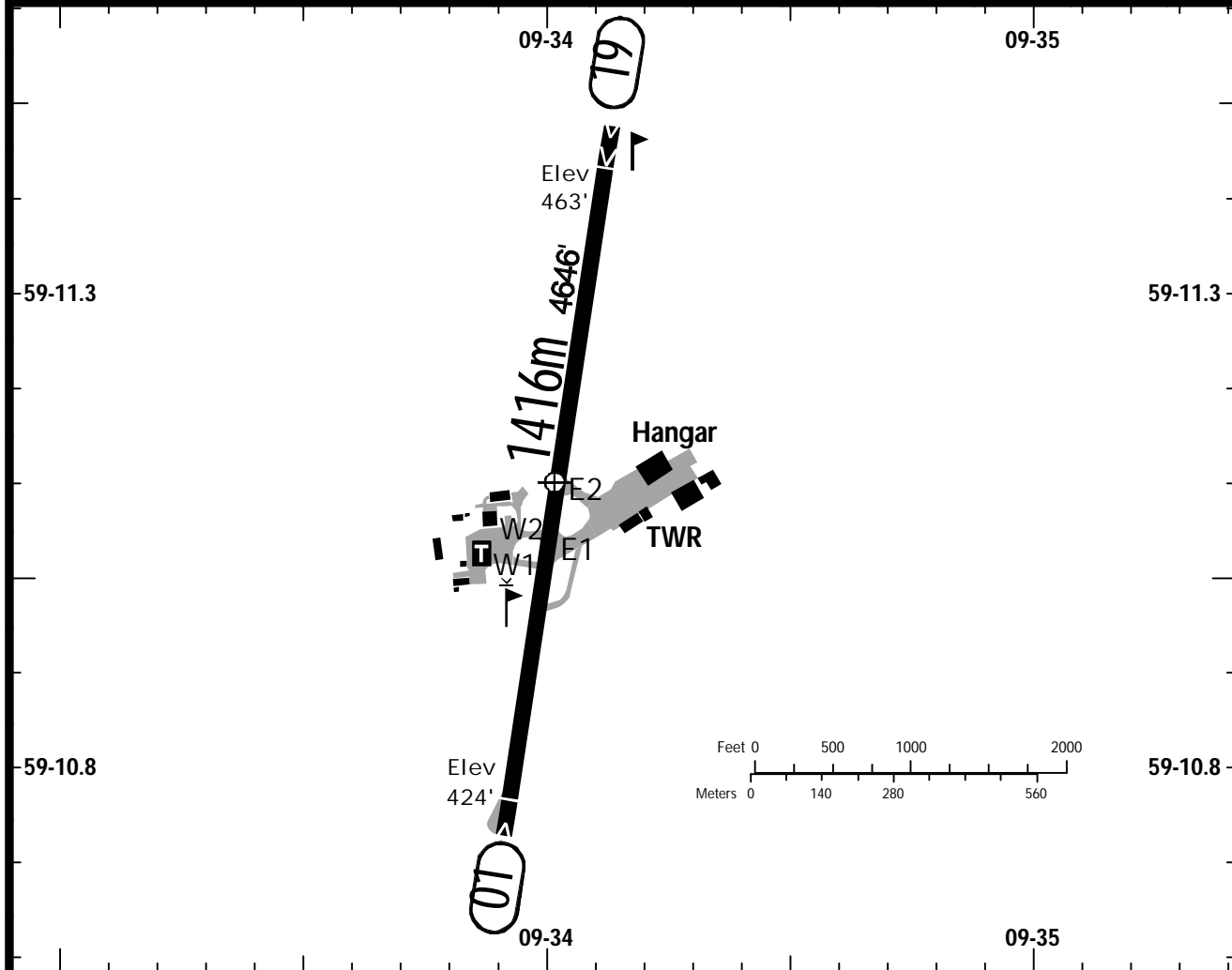
SKIEN
NORWAY

BRIEFING STRIP™

LOCATION Elev 463' /141m N59 11.1 E009 34.0	ATIS ATIS 121.700	RADIO GEITERYGGEN TRAFFIC 119.200 ⁽¹⁾
--	-----------------------------	--

ADMITTED AIRCRAFT

⁽¹⁾ Blind transmissions



WDI - OBSTL

RWY No	Dimension (m) - Surface	TORA (m)	LDA (m)	Strength	Lights
01 (007°) 19 (187°) ¹	1416 x 30 Asphalt	1199	1161 1199	5.7t MTOW	---

1 RWY is grooved

Longitudinal profile
RWY 01/19

CAUTION: Downdrafts and wind shear may occur:

- on final RWY 19 when wind SE-W above 12 KT,
- on final RWY 01 when wind NW to NE above 12 KT.

Birds in vicinity of AD.

Traffic circuits should be flown alternatively on the E & W side of RWY at 1500', 1 NM from RWY.

ARR VFR ACFT shall be established on final MNM 1 NM from THR.

DEP VFR ACFT shall climb MNM 1200' on RWY heading.

ARR/DEP shall proceed via one of the depicted points.

LDG/DEP of ACFT or HEL are not permitted when parachutists are in the air.

Pilots are instructed to maintain a listening watch on GEITERYGGEN TRAFFIC and report when starting up whether it is manned or not.